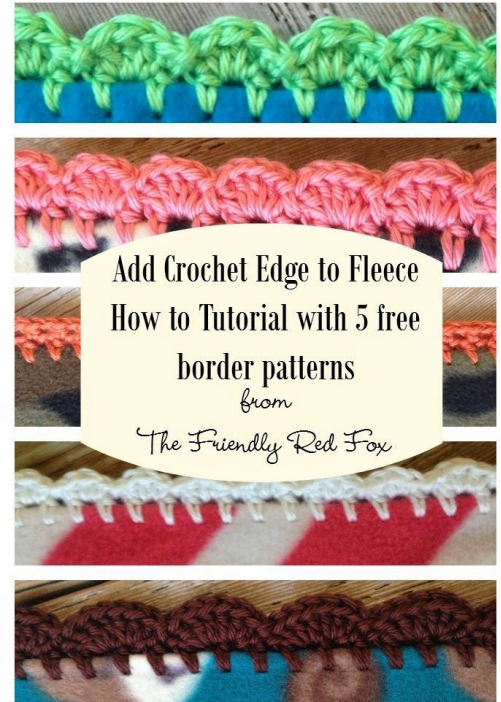


Crochet Edge on Fleece Blanket Tutorial

<https://www.thefriendlyredfox.com/crochet-edge-on-fleece-blanket-tutorial/>
February 27, 2015

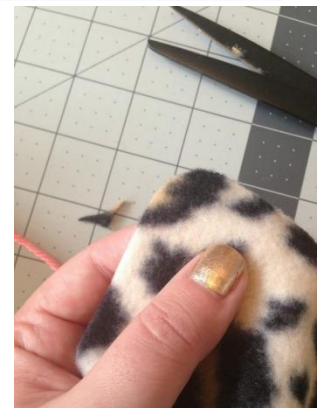


Materials You will need:

- Half a yard of fleece
- [Crochet Edge Fleece Blade](#)
- H (5.0 mm) Crochet Hook
- Cutting mat
- Needle for sewing in ends
- Coordinating yarn.



Once you trim your fleece down into as perfect of a square as you can get, trim those corners. For Baby Blankets, size is about 36" x 36". For Throw Size, about 48" x 54".



Now take the Crochet edge blade and attach it to a rotary cutter.

About half an inch from the edge go along the edge of the fleece. As the wheels turn it makes some little holes perfectly spaced for your crocheting needs. Go around the entire blanket.

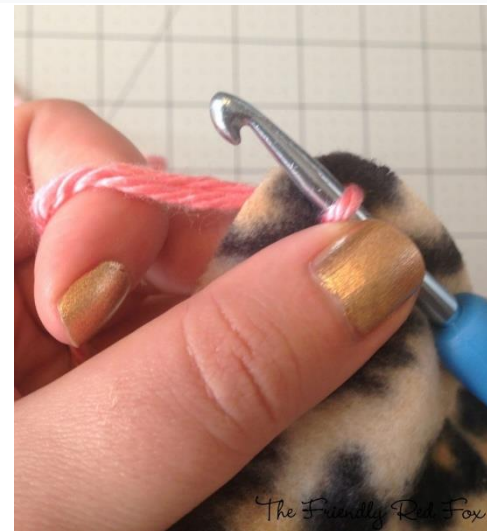


Put your hook through a corner hole.



Attach the yarn with a slip stitch

Then do a half double crochet, chain one, and place a half double crochet in the next hole. You can use a single crochet if you prefer but I like the solidness of a half double.



Repeat all around.



Then begin your pattern for the border.

Options for Borders



Border #1 - For this blanket I did:
5 DC in one stitch, slip stitch in next, 5
DC in next, slip stitch in next, repeat
around. I did not chain any before
starting my DCs.
Fasten off and weave in any ends.



Border #2 - For this blanket I did:
3 DC in one stitch, 3 DC in next, slip
stitch in
next, repeat around. I did not chain any
before starting my DCs.
Fasten off and weave in any ends.



Border #3 - For this blanket I did:

3 HDC in one stitch, slip stitch in next, repeat around. I did not chain any before starting my HDCs.
Fasten off and weave in any ends.



Border #4 - For this blanket I did:

DC in one stitch, chain one and skip a stitch, DC in next, repeat around. I did not chain any before starting my DCs.
Fasten off and weave in any ends.



Border 5 - For this blanket I did:

DC, TRC, DC in one stitch, slip stitch in next, DC, TRC, DC in next, slip stitch in next, repeat around. I did not chain any before starting my DCs.
Fasten off and weave in any ends.